

Firm #4512

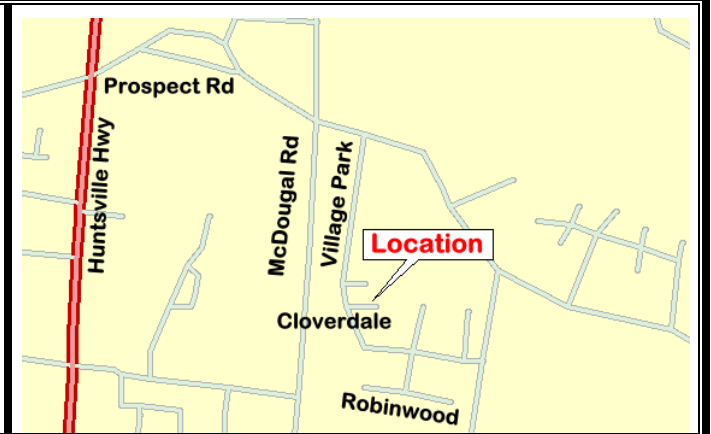
www.bollesrealty.com

ADDRESS	6 Cloverdale Circle, Fayetteville, TN 37334		LISTING NO.	9001
Map & Parcel	115M-E-9.00	Deed Reference	Portion of Deed Book B-14, Page 658	
Description	House & Lot		MLS #	1049621



Approx. S/F	1384	Lot Size	100 x 175 Irregular	Schools:	Highland Rim NGA LCHS
Living Room	14x17	Subdivision	Village Park	Water	County
Eat-In Kitchen	14x17	Exterior	Brick	Taxes	TBD
Bedroom	12x14	Roof Type	Composition Shingle	Year Built	2009
Office	11x12	Floors	Carpet, Tile, Vinyl		
Study	11x12	Driveway	Gravel		
Full Baths	2	Heat/Cool	Central		

Brand new, this charming brick cottage is welcoming you home. Features include a covered front porch, spacious living room, walk-in closet in the master bath, CHA, and eat-in kitchen with nice cabinets, stove, and built-in microwave. A great buy with over 1300 square feet of living area!

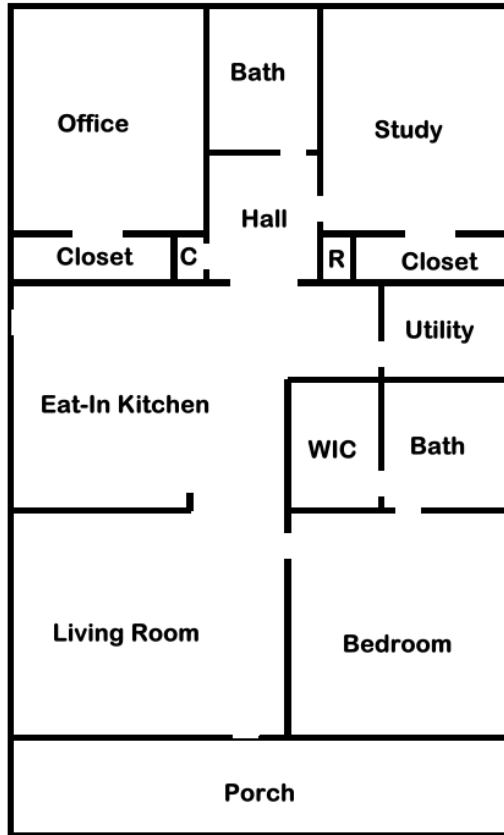


Richard Bolles - Broker / Appraiser
Ken Noel - Affiliate Broker
Colin Wakefield - Aff. Broker / Appraiser

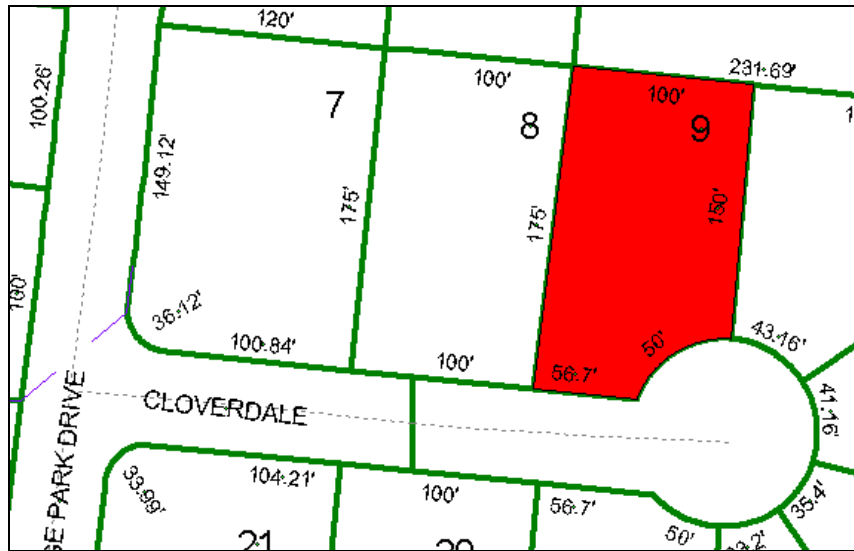
Linda McWhirter - Affiliate Broker
Kathy Gilland - Affiliate Broker
Walter Sloan - Affiliate Broker

Neal Scott - Affiliate Broker
John Hoagland - Auctioneer / Broker
Walter Sloan - Affiliate Broker

James Cashion - Broker / Appraiser
Jerry Groce - Auctioneer / Aff Broker
Cindy Endsley - Aff Broker / Appraiser



Floor Plan



Tax Plat

Richard Bolles - Broker / Appraiser
 Ken Noel - Affiliate Broker
 Colin Wakefield - Aff. Broker / Appraiser

Linda McWhirter - Affiliate Broker
 Kathy Gilland - Affiliate Broker
 Walter Sloan - Affiliate Broker

Neal Scott - Affiliate Broker
 John Hoagland - Auctioneer / Broker
 Walter Sloan - Affiliate Broker

James Cashion - Broker / Appraiser
 Jerry Groce - Auctioneer / Aff Broker
 Cindy Endsley - Aff Broker / Appraiser